

O Waly, Waly

English Folk Song
arranged by Keith Willis

Andante
espress. p

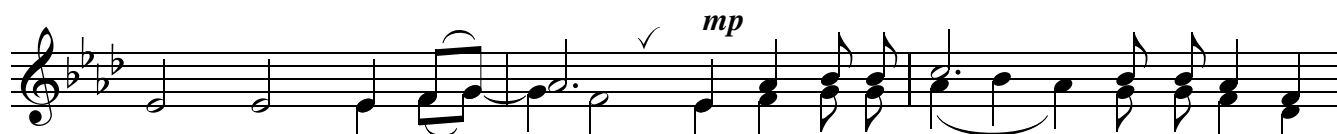
Solo or
small group



1. The wa - ter is wide, I can-not get o'er and nei - ther



have I wings to fly; Give me a boat that will car - ry two and both shall



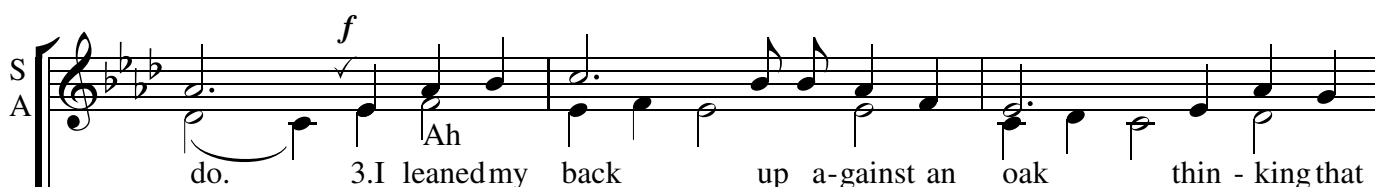
row, my love and I 2. O down in the mea - dows the oth - er



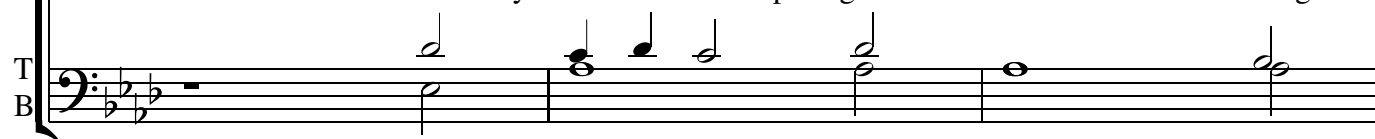
day, a gath - ering flowers both fine and gay, a gath - er - ing



flowers both red and blue I lit - tle thought what love can



do. Ah 3. I leaned my back up a - gainst an oak thin - king that



Ah _____
for accompanying parts



he was a trus - ty tree, but first he bend - ed and then he

mf *mp dolce*

broke, and so did my false love to me. A ship there is and sails the

sea she's loa-ded deep as deep can be. But not so

mp

deep as the love I'm in: I know not if, I sink or swim. If I sink or

Ah

swim I sink or swim. *p* O love is handsome and love is fine. And love's a

Ah

rallentando

jewel while it is new, but when it is old it gro - weth

pp

old. And fades a - way like mor - ning dew.

O Waly, Waly

English Folk Song
arranged by Keith Willis

**Andante
espress. p**

Solo or
small group

1. The wa - ter is wide, I can-not get o'er and nei - ther
have I wings to fly; Give me a boat that will car - ry two and both shall
row, my love and I 2. O down in the mea - dows the oth - er
day, a gath - ering flowers both fine and gay, a gath - er - ing
flowers both red and blue I lit - tle thought what love can do. 3. I leaned my
back up a - gainst an oak thin - king that he was a trus - ty
tree, but first he bend - ed and then he broke, and so did my false love to

Ah—
for accompanying parts

mp *mf*

mp dolce

me. A ship there is and sails the sea she's loa-ded deep as deep can

mp

be. But not so deep as the love I'm in: I know not if, I sink or

swim. If I sink or swim I sink or swim. O love is handsome and love is

Ah

rallentando

fine. And love's a jewel while it is new, but when it is

And fades a - way like mor- ning dew.

pp

old it grow-eth cold.